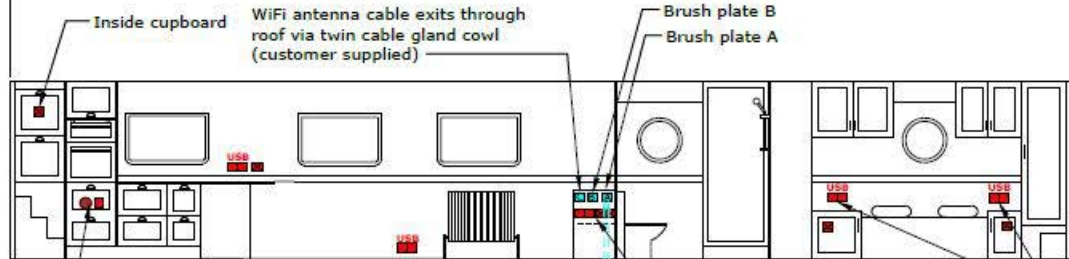


17381 mm (57ft)

2286 mm (7ft 6in)

12802 mm (42ft)

2286 mm (7ft 6in)



Single 240V socket plus skin fitting in cupboard (for future fitting of washing machine)

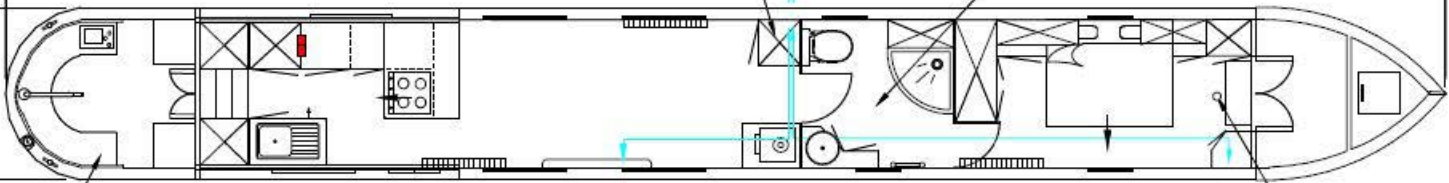
Cable for Wifi antenna exits through brush plate B

Inside cupboard

Extractor fan

Below gunwale

2083 mm (6ft 10in)



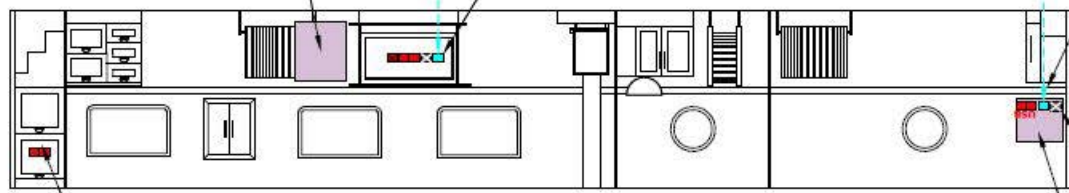
Wrap around stern

Reinforced for fitting of a wine rack

Ethernet cable to brush plate A (500mm tail)

TV antenna position

WINDOWS: 36in x 21in Single Glazed
PORT HOLES: 18in Diameter Single Glazed









Inside cupboard

Reinforced for TV bracket

TV aerial point

Ethernet cable to brush plate A (500mm tail)

- KEY**
-  Double 240V socket x 4
 -  Double 240V socket with USB charge points x 5
 -  12V Cigar style socket x 7
 -  Aerial point
 -  Brush plate
 -  CAT5 shielded Ethernet cable - CUSTOMER SUPPLIED

IMPORTANT
PLEASE ALSO REFER TO APPENDICES A, B, C & D

ALL DIMENSIONS IN MILLIMETRES UNLESS OTHERWISE STATED AND ARE APPROXIMATE